



ONSLOW SQUARE LONDON SW7

This unique Raised Ground Floor apartment offers two generously sized double bedrooms entered via its own front door street entrance, a recently landscaped private rear garden as well as access to the two garden squares one of which has a private tennis court.

The property is situated on the favoured north terrace and therefore south facing over Onslow Square, in the heart of South Kensington.













**Private Street Entrance | Wooden floors
throughout | 22ft south facing Double Reception
room with a fireplace | Fully Fitted Kitchen |
Utility | 22ft Master Bedroom with full ensuite
Bathroom | 2nd Double Bedroom | Separate
Shower Room | Self-contained Basement storage
room with a window | Wrought Iron steps down
from a Balcony to the Private Patio Garden with
rear street access | Resident Caretaker
|Communal Heating and Hot water | Two
communal Garden Squares, one with a Private
Tennis Court**



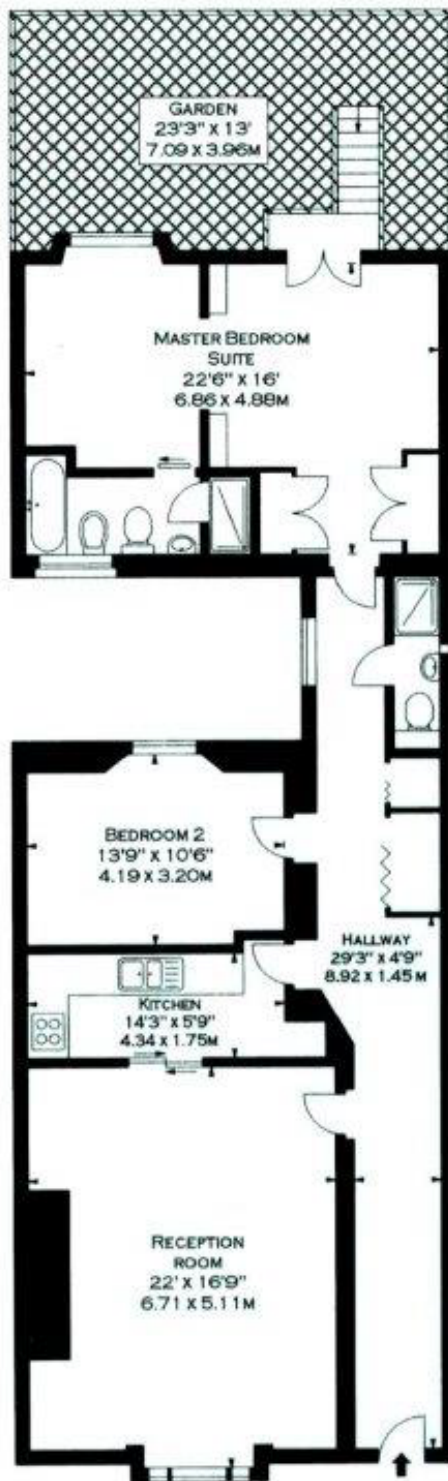
LEASEHOLD: 167 YEARS REMAINING.
GROUND RENT: PEPPERCORN

Price: £2,500,000

Subject to Contract.

Service charge is £2300 per quarter, including
communal central heating and hot water,
resident caretaker and two communal garden
Squares





Raised Ground Floor

Approx. Gross Internal Area

1301 sqft - 120.86 sqm

(Store)

Approx. Gross Internal Area

93 sqft - 8.64 sqm



Basement Store

ar

ARLINGTON
ROUSE

Arlington Rouse

Sales Enquires:

+44 (0)7771 895 171

Admin & Management:

020 7980 7806

mail@arlingtonrouse.com

296 Old Brompton Road,

London, SW5 9JF